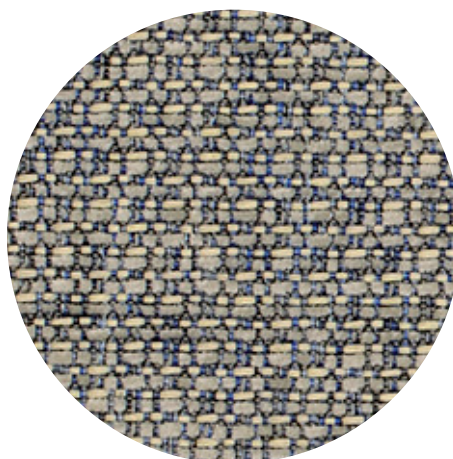
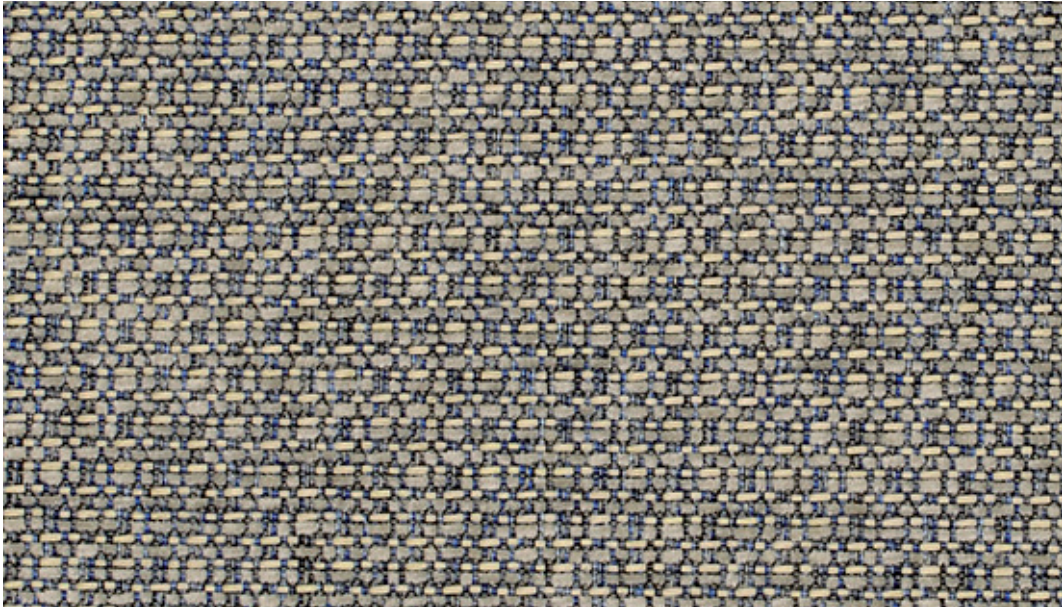


Q
e
T
i
Q



TEMPT™

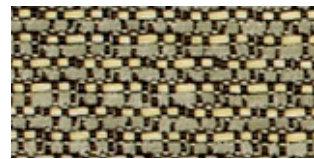
by Gabriel



67045



65076



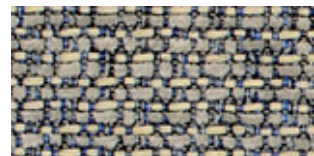
68100



64118



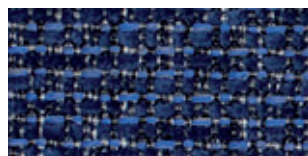
66129



67045



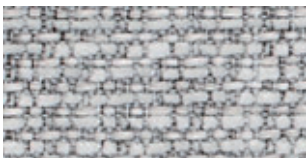
66130



66131



61169



60152



60146



61168



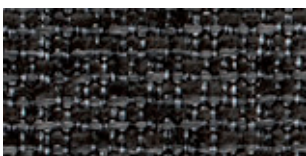
60147



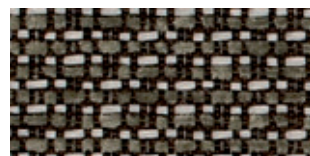
61171



61172



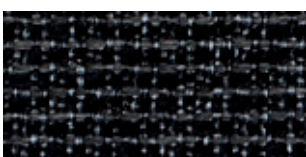
60153



61170



68101







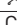


60900



61173

TEMPT™

Design no.	8913	
Fields of application	soft seating	
Material	polyester	100 %
Weight	504 g/lm · (16.26 oz/lin.yd.)	
Width	140 cm · (55")	
Abrasion resistance	rubs · EN ISO 12947-2 (Martindale)	90,000
Pilling	scale 1-5, max. 5 · EN ISO 12945-2	4-5
Colour fastness to light	scale 1-8, max. 8 · EN ISO 105 - B02	5-8
Colour fastness to rubbing	scale 1-5, max. 5 · EN ISO 105x12 (wet/dry)	4-5/4-5
Cleaning	dry cleaning	P(W)
		
Flammability	EN 1021-1&2 · BS 5852 0&1 · Cal. 117-E Class 1 · Cal. 117-E Class 13 Will also pass other flammability standards. Flame retardant performance is dependent upon the foam used.	
US ACT	<ul style="list-style-type: none">  AATCC 16 Light fastness  AATCC 8 or 116 wet/dry crocking  California Bulletin CAL 117-E Class 1  California Bulletin CAL 117-2013 section 1  ASTM D4966-02 Martindale Abrasion (General Duty Upholstery)  ASTM D3511 Pilling 	<ul style="list-style-type: none"> pass pass pass pass pass pass
Design/Colours	Cenk Kivrikoglu	
Subject to changes and colour differences		

